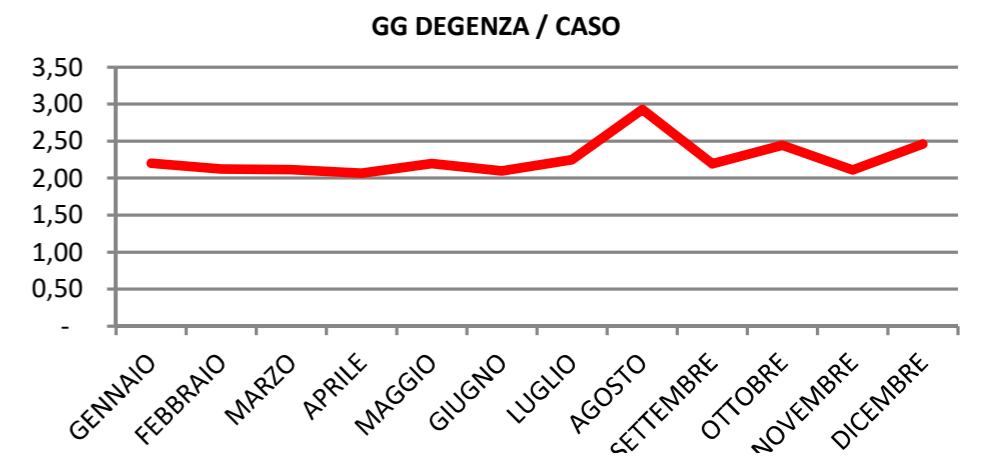
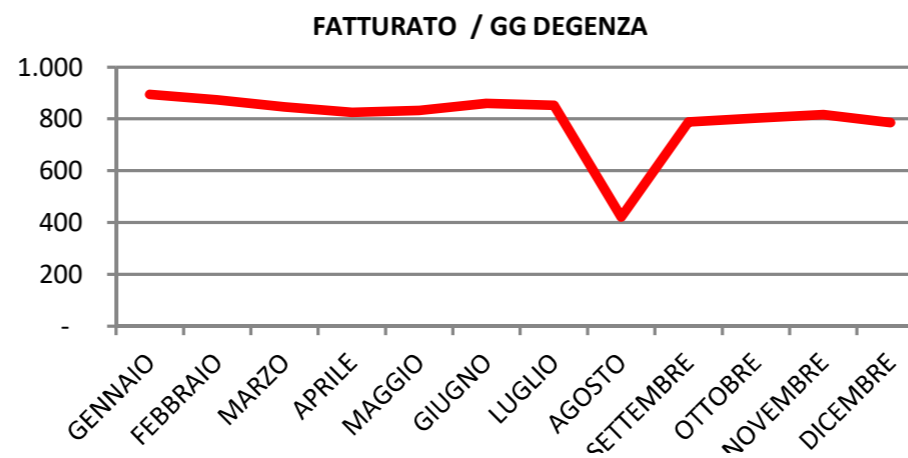
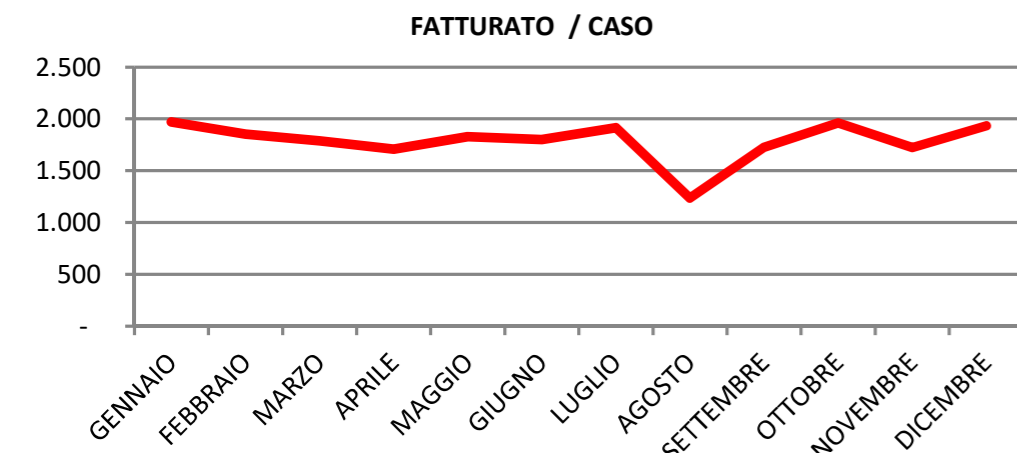
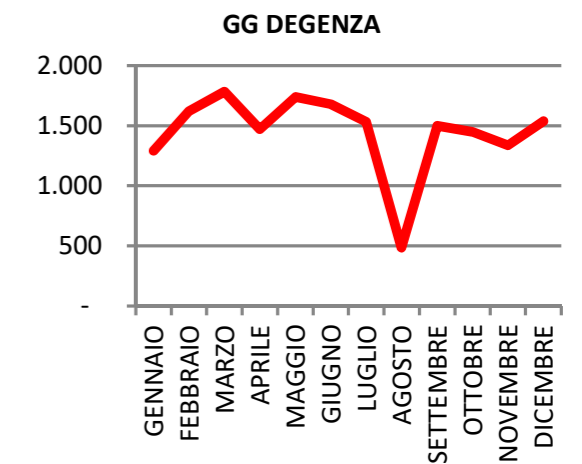
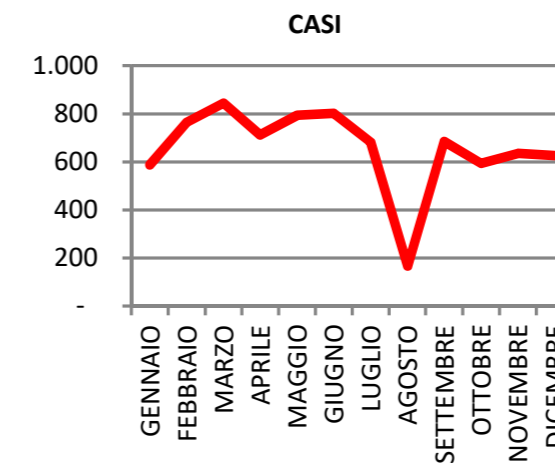
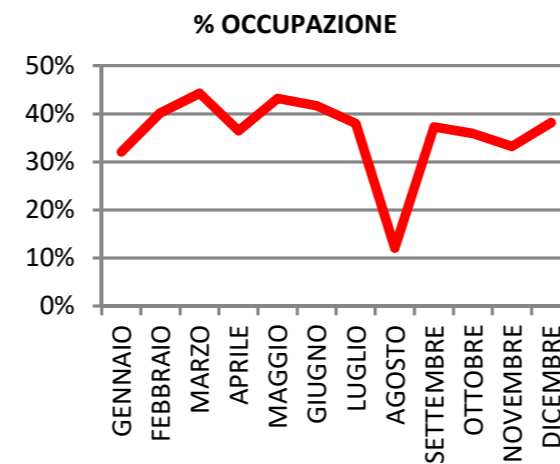
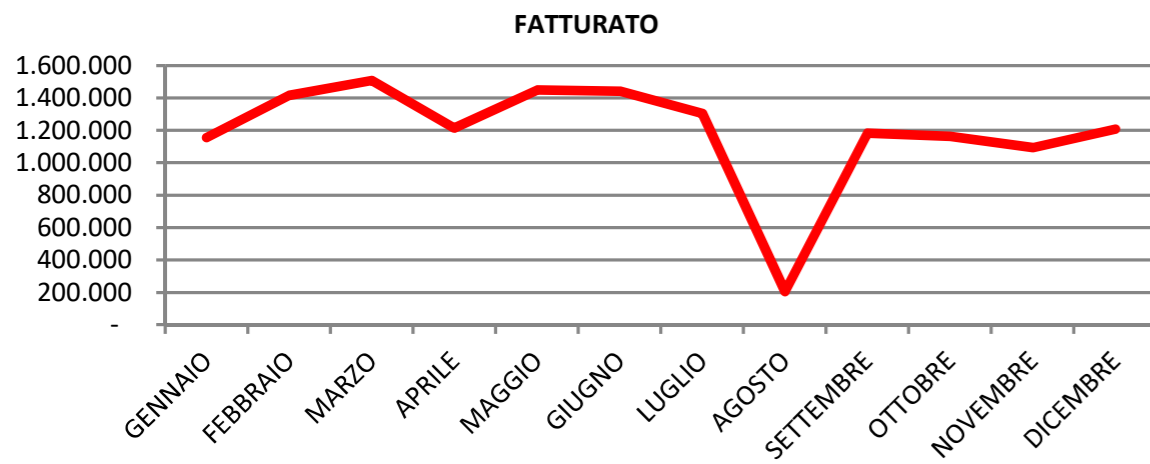
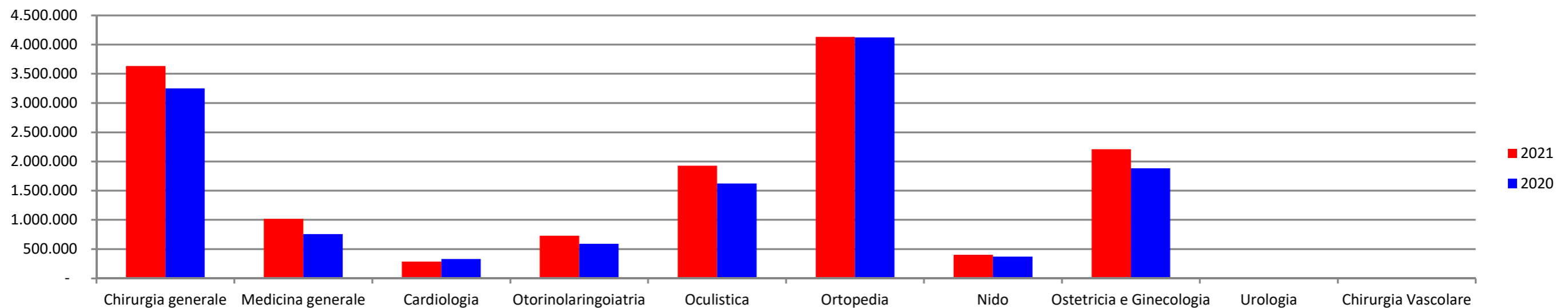


MESE	CASI	GG DEG	OCCUP.	FATTURATO	F/CASO	F/GG	GG/CASO
GENNAIO	587	1.292	32%	1.155.717	1.969	895	2,20
FEBBRAIO	764	1.621	40%	1.415.088	1.852	873	2,12
MARZO	844	1.783	44%	1.508.387	1.787	846	2,11
APRILE	711	1.470	36%	1.213.691	1.707	826	2,07
MAGGIO	793	1.740	43%	1.449.432	1.828	833	2,19
GIUGNO	801	1.678	42%	1.442.071	1.800	859	2,09
LUGLIO	681	1.530	38%	1.303.355	1.914	852	2,25
AGOSTO	166	486	12%	204.937	1.235	422	2,93
SETTEMBRE	685	1.501	37%	1.182.511	1.726	788	2,19
OTTOBRE	593	1.448	36%	1.162.832	1.961	803	2,44
NOVEMBRE	634	1.337	33%	1.092.297	1.723	817	2,11
DICEMBRE	625	1.537	38%	1.207.412	1.932	786	2,46
<b>TOTALE</b>	<b>7.884</b>	<b>17.423</b>	<b>37%</b>	<b>14.337.730</b>	<b>1.819</b>	<b>823</b>	<b>2,21</b>

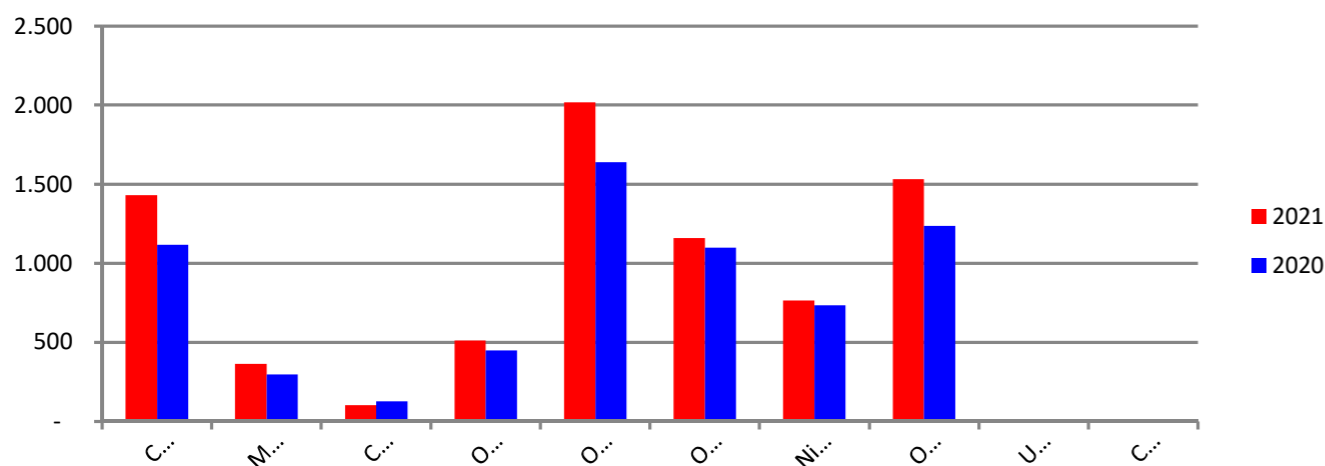


DIPARTIMENTO	CASI			GG DEG			FATTURATO			F/CASO			F/GG			GG/CASO		
	2021	2020	%	2021	2020	%	2021	2020	%	2021	2020	%	2021	2020	%	2021	2020	%
Chirurgia generale	1.429	1.116	+28,0%	2.693	2.081	+29,4%	3.630.005	3.251.195	+11,7%	2.540	2.913	-12,8%	1.348	1.562	-13,7%	1,88	1,86	+1,1%
Medicina generale	363	298	+21,8%	2.552	3.678	-30,6%	1.017.475	757.330	+34,4%	2.803	2.541	+10,3%	399	206	+93,6%	7,03	12,34	-43,0%
Cardiologia	104	128	-18,8%	783	1.541	-49,2%	287.812	330.761	-13,0%	2.767	2.584	+7,1%	368	215	+71,3%	7,53	12,04	-37,5%
Otorinolaringoiatria	511	447	+14,3%	668	794	-15,9%	729.682	591.032	+23,5%	1.428	1.322	+8,0%	1.092	744	+46,7%	1,31	1,78	-26,4%
Oculistica	2.019	1.640	+23,1%	1.869	1.743	+7,2%	1.927.567	1.620.682	+18,9%	955	988	-3,4%	1.031	930	+10,9%	0,93	1,06	-12,9%
Ortopedia	1.161	1.100	+5,5%	2.661	2.704	-1,6%	4.132.350	4.122.418	+0,2%	3.559	3.748	-5,0%	1.553	1.525	+1,9%	2,29	2,46	-6,8%
Nido	764	736	+3,8%	2.279	2.242	+1,7%	404.319	373.253	+8,3%	529	507	+4,4%	177	166	+6,6%	2,98	3,05	-2,1%
Ostetricia e Ginecologia	1.533	1.236	+24,0%	3.918	3.893	+0,6%	2.208.519	1.881.557	+17,4%	1.441	1.522	-5,4%	564	483	+16,6%	2,56	3,15	-18,9%
Urologia	-	-		-	-		-	-		#DIV/0!	-		#DIV/0!	-			#DIV/0!	
Chirurgia Vascolare	-	-		-	-		-	-		#DIV/0!	-		#DIV/0!	-			#DIV/0!	
<b>TOTALE</b>	<b>7.884</b>	<b>6.701</b>	<b>+17,7%</b>	<b>17.423</b>	<b>18.676</b>	<b>-6,7%</b>	<b>14.337.730</b>	<b>12.928.227</b>	<b>+10,9%</b>	<b>1.819</b>	<b>1.929</b>	<b>-5,7%</b>	<b>823</b>	<b>692</b>	<b>+18,9%</b>	<b>2,21</b>	<b>2,79</b>	<b>-20,7%</b>

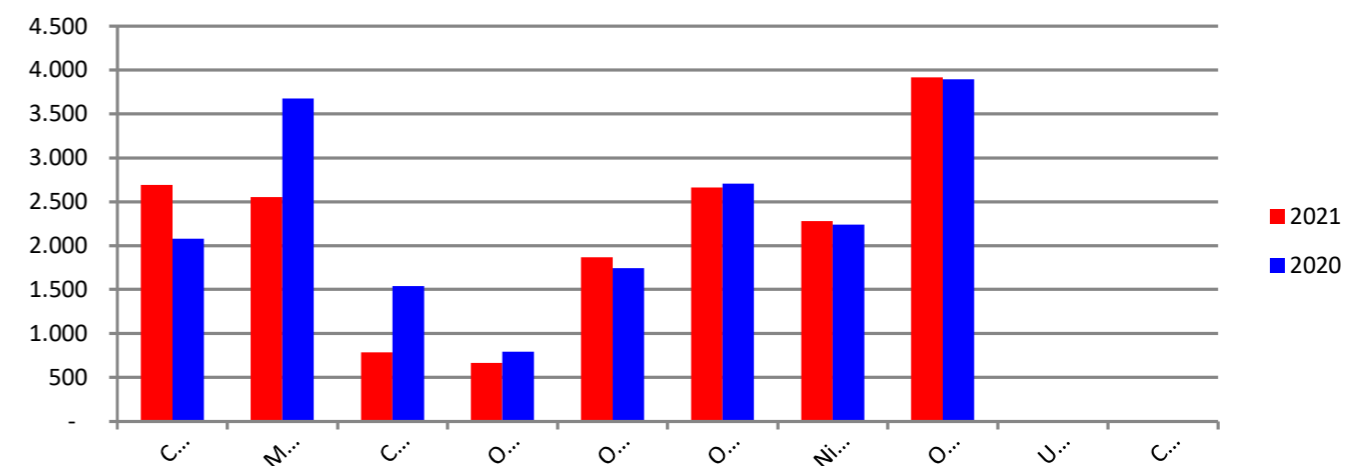
FATTURATO



CASI



GG DEGENZA



DIPARTIMENTO	CASI		GG DEGENZA		FATTURATO	
	2021	%	2021	%	2021	%
Chirurgia generale	1.429	18,1%	2.693	15,5%	3.630.005	25,3%
Medicina generale	363	4,6%	2.552	14,6%	1.017.475	7,1%
Cardiologia	104	1,3%	783	4,5%	287.812	2,0%
Otorinolaringoiatria	511	6,5%	668	3,8%	729.682	5,1%
Oculistica	2.019	25,6%	1.869	10,7%	1.927.567	13,4%
Ortopedia	1.161	14,7%	2.661	15,3%	4.132.350	28,8%
Nido	764	9,7%	2.279	13,1%	404.319	2,8%
Ostetricia e Ginecologia	1.533	19,4%	3.918	22,5%	2.208.519	15,4%
Urologia	-	0,0%	-	0,0%	-	0,0%
Chirurgia Vascolare	-	0,0%	-	0,0%	-	0,0%
<b>TOTALE</b>	<b>7.884</b>		<b>17.423</b>		<b>14.337.730</b>	

CASI



GG DEGENZA



FATTURATO

